

### 130 Dress

Burda sizes 44, 46, 48, 50, 52

Length from waist 78 cm (30 3/4 ins)

### Materials

Linen lawn,

width: 140 cm (55 in)

length: 2.65 – 2.65 – 2.65 – 2.80 – 2.80 m  
(3 – 3 – 3 – 3 1/8 – 3 1/8 yds).

Elastic, 7 mm (1/4 in) wide and 1.10 – 1.10 – 1.20 – 1.30 – 1.30 m (1 1/4 – 1 1/4 – 1 3/8 – 1 1/2 – 1 1/2 yd) long.

Recommended fabrics: Lightweight dress fabrics with some body.

### Preparations

Print the pattern out on letter or A4 sized paper. It is **very important** to not scale or fit any of the pages, you must print the document in **actual size**. Your pattern will print on multiple pages, which you will then tile together. Arrange the sheets on a large, hard and flat surface matching up the numbers and letters (i.e. 6A to 6A). Cut or fold one of the sides and match the edge to it's corresponding side. Then, tape down in place so paper is secure.

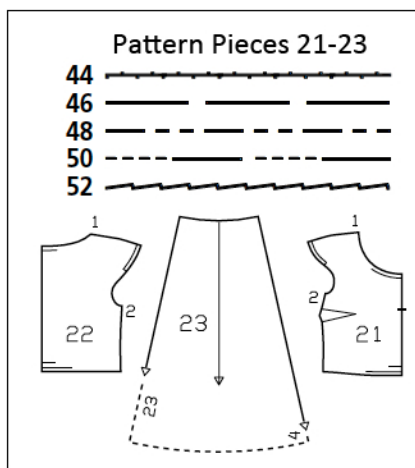
Trace the pattern pieces from the pattern sheet following the lines and markings for your size.

For the hem, measure and mark the length from upper edge at several points and connect the dots with an even curve. The stitching lines on pieces 21 and 22 are marked for size 44. For sizes 46 – 52, mark the stitching lines at the same width.

**burda style magazine patterns do not have seam allowance included.**

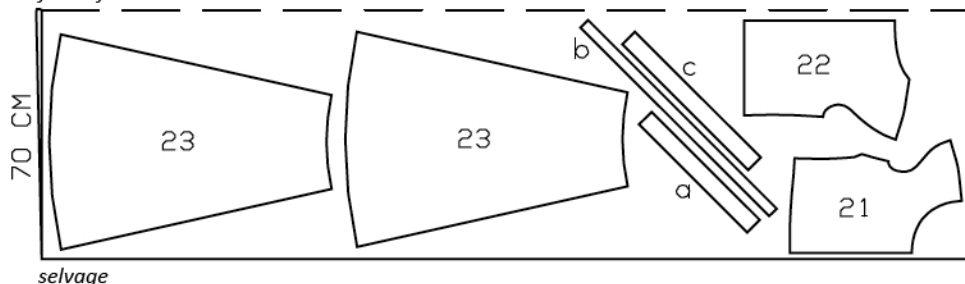
Seam and hem allowance to be added:

Seams and edges 1.5 cm (5/8 in), lower front and back edge 2 cm (3/4 in), upper skirt panel edge 2 cm (3/4 in), hem 1.5 cm (5/8 in).



### Sizes 44-48

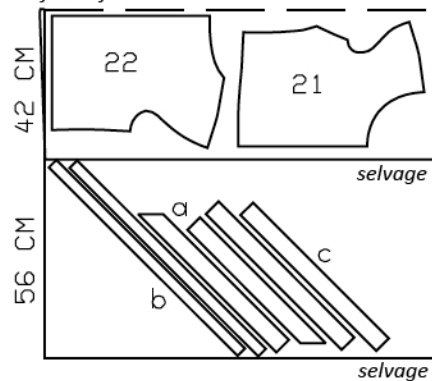
*fabric fold*



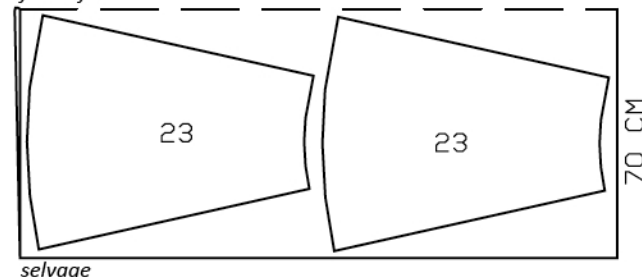
*selvage*

### Sizes 50,52

*fabric fold*



*fabric fold*



*selvage*

Fold fabric as shown in the pattern layout. Right side faces in on a double layer of fabric. Right side faces up on a single layer.

### Cutting Out

- 21 front 2x  
22 back 2x  
23 skirt panel 4x

Draft the following pieces NOT included in the pattern:

a) bias strip for neck edge, a total of 84 – 85 – 87 – 88 – 90 cm (33 – 33 1/2 – 34 1/4 – 34 3/4 – 35 1/2 ins) long, 5 cm (2 ins) wide (incl. allowances),

b) drawstring band, a total of 150 cm (59 ins) long, 3 cm (1 1/4 ins) wide (incl. allowances),

c) 2 bias strips for armholes and attached sleeves 50 – 51 – 52 – 53 – 54 cm (19 3/4 – 20 1/4 – 20 1/2 – 21 – 21 1/4 ins) long, 5 cm (2 ins) wide (incl. allowances).

### Sewing

Stitch centre front seam of dress bodice below slit mark. Press seam allowances open and press slit edges. Turn in allowances on slit edges. Stitch 7 mm (1/4 in) from slit edges and stitch across lower end of slit. Stitch bust darts. Press darts down. Stitch centre back seam and shoulder seams. Press seam allowances open.

Neck edge: Fold bias strip for neck edge lengthwise and press, right side facing out. Pin folded bias strip to neck edge so that fold edge of strip lies on garment piece, 1.2 cm (1/2 in) past seam line. Stitch along marked neck edge. Trim seam allowances. Turn bias strip up and turn ends under. Turn bias strip to inside and press. Stitch from right side as marked, thereby forming casing.

Fold drawstring band lengthwise. Stitch 7 mm (1/4 in) from fold edge. Turn drawstring right side out and press. Pull drawstring into casing. Knot ends of drawstring.

Face edges of armholes and attached sleeves with bias strips as for neck edge. Do not turn in ends of bias strips. Topstitch sleeve edges as marked, to form elastic casings. Pull elastic into casings and stitch across ends for a finished



width of 9 – 9 – 10 – 10 – 11 cm (3 1/2 – 3 1/2 – 4 – 4 – 4 3/8 ins).

At armhole edges, turn bias strips up again. Stitch side seams, also stitching ends of bias strips together. Topstitch close to armhole edges, below elastic casings.

On skirt, stitch centre seams and side seams. Stitch skirt to bodice. Neaten seam allowances together, press up, and stitch as marked to form casing, leaving a section of seam open, for elastic. Pull elastic into casing. Sew ends of elastic together for a finished circumference of 82 – 86 – 92 – 98 – 104 cm (32 1/2 – 34 – 36 1/4 – 38 3/4 – 41 ins). Sew seam opening closed.

Press hem allowance to inside, turn in, and stitch.