

### 127 Bustier Top

Sizes 72, 76, 80, 84, 88

#### Materials

**Check fabric with widthwise stretch,**  
width: 145 cm (57 in)  
length: 0.60 m (3/4 yd) for all sizes.

**Batiste with widthwise stretch,**  
width: 140 cm (55 in) wide, for lining  
length: 0.15. m (1/4 yd).

Vilene/Pellon G 700.

Hook-and-eye fastening band: 0.10 m (1/8 yd).

Boning tape

**Recommended fabrics:** Cotton fabrics with some body.

#### Preparations

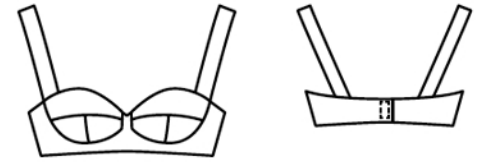
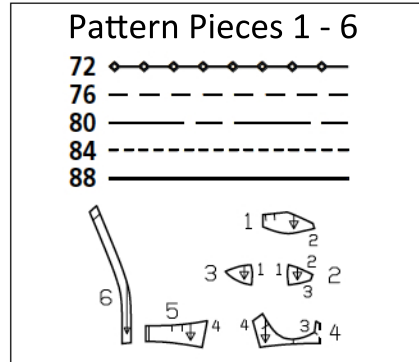
Print the pattern out on letter or A4 sized paper. It is **very** important to not scale or fit any of the pages, you must print the document in **actual size**. Your pattern will print on multiple pages, which you will then tile together. Arrange the sheets on a large, hard and flat surface matching up the numbers and letters (i.e. 6A to 6A). Cut or fold one of the sides and match the edge to it's corresponding side. Then, tape down in place so paper is secure.

Trace the pattern pieces from the pattern sheet following the lines and markings for the correct size.

burda style magazine patterns do not have seam allowance included.

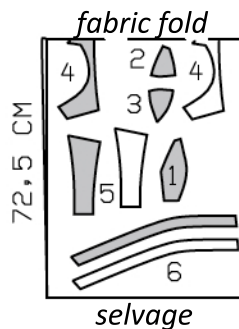
Seam and hem allowance to be added:

Side seams add 1.5 cm (5/8"), remaining seams and edges add 1 cm (3/8").

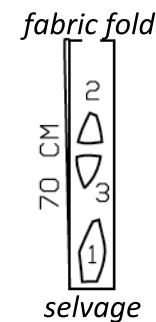


Cut pieces 1 - 6 on a double layer of fabric. Use the indicated fabric widths below.

Check Fabric, 145 cm width



Lining, 140 cm width



#### Cutting Out

Check fabric,	
1 upper bust piece	2x
2 lower front bust piece	2x
3 lower side bust piece	2x
4 front, on a fold	2x
one of which is inside piece	
5 back	4x
two of which are inside pieces	
6 strap	4x

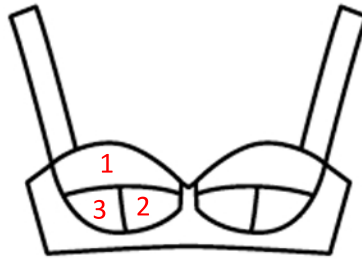
Batiste (lining): pieces 1 to 3.

Interfacing: Fuse interfacing to wrong sides of all outer pieces.

## Sewing

### Bust Pieces

Stitch bottom bust cup pieces (piece 2 and 3) right sides together. Trim seam allowances to 7 mm (1/4") wide and press open. Stitch upper bust piece (piece 1) to lower bust piece (piece 2 / 3). Trim seam allowance to 7 mm (1/4") and press open. Repeat for other bust cup.



Stitch lower edge of bust cup piece to curved edge of front (piece 4). Start sewing at top corner nearest side seam and stitch curve to notch 3. Pivot at notch 3 and sew up vertical seam to top edge. Make sure to match all notches when sewing curved seam. Clip seam allowance into corners. Trim seam allowances down to 7 mm (1/4") and clip into seam allowance around curve. Press allowances toward bust cup pieces.

### Boning casing

Stitch side seams, right sides together. For the boning casing, stitch seam allowance edges together, 1.2 cm (1/2") from side seam. Press seam allowances onto front.

### Strap

For each strap, lay interfaced strap piece on piece with no interfacing, right sides together. Stitch along long edges and narrow back edges. Trim seam allowances and turn straps right side out then press all edges. Baste straps to top of bust pieces, between seam marks as indicated on the pattern.

### Lining

On lining bust pieces, stitch same as outside pieces (sew pieces 2 & 3 together and then stitch to lower edge of piece 1). Stitch lining bust cup pieces to inside front piece (piece 4) along curve. Sew in same way as outer pieces. Stitch side seams together and press seams open.

### Bustier

Pin inside and outside bustier piece right sides together, catching straps at upper edge. Stitch together, around all edges, interrupting stitching at lower edge, for casing to insert boning. Also leave approx. 15 cm (6") open at centre front, for turning. Measure length of side seam for the boning. Cut boning tape to length of each side seam minus 5 mm (3/16") and round off ends of boning. Slide boning into casings. Sew openings in casing seams closed. Trim seam allowances, trimming corners diagonally. Clip close to stitching at upper edge, at centre front. Turn garment right side out. Press and sew seam opening closed.

Pin ends of straps under upper back edge, between seam marks. Try on garment to determine correct strap length. Sew strap ends in place.

### Hook

Lay hook half of fastening band under left back edge and lay eyelet half of band on right back edge and pin in place, turning ends of bands under. Stitch fastening bands in place.