

120 Blouse

Burda sizes 36, 38, 40, 42, 44
 Back length about 70 cm (28 ins)

Note: In accord with the latest fashion trend, the edges of this style are left unneaten. If you prefer, neaten the edges with zigzag or overlock stitching.

Materials

crêpe de chine,
 width: 150 cm (59 in)
 length: 2.30 m (2 5/8 yds) for all sizes.

Interfacing, Vilene/Pellon G 785.

2 buttons.

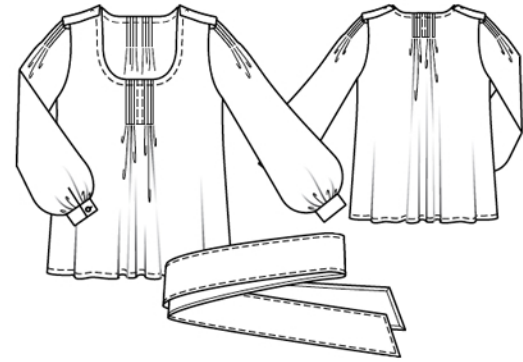
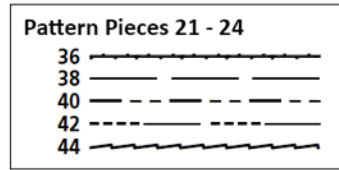
Recommended fabrics: Softly draping blouse fabrics.

Preparations

Print the pattern out on letter or A4 sized paper. It is **very important** to not scale the document. Your pattern will print on multiple pages, which you will then tile together. Arrange the sheets on a large, hard and flat surface matching up the numbers and letters (i.e. 6A to 6A). Cut or fold one of the sides and match the edge to its corresponding side. Then, tape down in place so paper is secure.

Trace the pattern pieces from the pattern sheet. Follow lines and details for style 120.

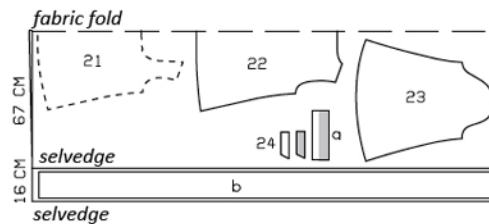
BurdaStyle patterns do not have seam allowance included. Add seam and hem allowances: Seams and edges 1.5 cm (5/8 in), sash 1 cm (3/8 in), no allowances at neck or hem edges.



Cutting Out

- 21 front, on a fold 1x
- 22 back, on a fold 1x
- 23 sleeve 2x
- 24 shoulder tab 4x
- a) 2 cuffs with 3 cm (1 1/4 in) underlap, 23.5 – 24 – 24.5 – 25 – 25.5 cm (9 1/4 – 9 1/2 – 9 3/4 – 10 – 10 1/8 ins) long, 8 cm (3 1/4 ins) wide, finished width 4 cm (1 5/8 ins),
- b) sash, 225 cm (88 1/2 ins) long, 14 cm (5 1/2 ins) wide.

Interfacing: See shaded pieces on pattern layout.



Pattern layout
150 cm wide fabric

Fold the fabric as shown in the pattern layout, right side facing in. Cut the sash from a single layer of fabric.

Sewing

Hand-baste along marked pleat folds on front, back and sleeve pieces to make these lines visible on right side of fabric.

Fold front and back each on marked pleat folds, wrong side facing in, and topstitch as marked. Work from the centre to press pleats to each side. Stitch across pleats at ends. Baste pleats to neck edge.

Stitch side seams, shoulder seams and sleeve seams. Topstitch 1 cm (3/8 in) from neck and hem edge. These edges may be allowed to fray.

Shoulder tabs: Lay each interfaced tab piece on tab piece with no interfacing, right sides together. Stitch along lengthwise edges and slanted end of tabs. Turn right side out. Lay tabs on shoulder seams so that shorter edges lie on front. Baste tabs to edges of armholes.

Slash sleeve vents open as marked. Spread cut edges apart to a straight line. Turn edges twice under and stitch. Mitre top end of vents on inside with small diagonal seam, like a dart.

Sleeve pleats: Fold sleeves on pleat fold lines, with wrong side facing in. Topstitch fold edges from top to markings. Work from centre of sleeve to press front pleats forward and back pleats toward back. Stitch sleeve seams. Gather lower edges of sleeves to 20.5 – 21 – 21.5 – 22 – 22.5 cm (8 1/4 – 8 3/8 – 8 1/2 – 8 3/4 – 9 ins).

Stitch cuffs to lower edges of sleeves, leaving underlap at back edges of vent extending. Press seam allowances of joining seams and of other long edges of cuffs onto cuffs. Fold cuffs lengthwise and stitch across ends. Turn right side out. Baste inside edges in place and baste upper edges of underlap together. Topstitch cuffs close to joining seam and upper edge of underlap. Work one buttonhole in front end of each cuff.

Set in sleeves, easing sleeve caps. Pin slanted end of each shoulder tab to neck edge. Sew in place with a cross stitch, about 2 cm (3/4 in) from end of tab.

Trim ends of sash at angles. Turn in allowances around all edges of sash and stitch.

Additional Information:

Burda patterns do not include seam and hem allowances. We recommend adding 1-2 cm (3/8 - 3/4 inch) for seams and 2-5 cm (3/4 - 2 inch/es) for hems. Refer to your specific pattern instructions for exact measurements.

The fabric requirements are based on the fabric used for the original designs. These amounts will change if you use fabric of a different width. The pattern of the fabric determines whether all the pieces must be cut in the same direction or whether some can be reversed to save fabric.

The cutting layout printed with the instructions shows the best way to place the pattern pieces on our original fabric. Fold the fabric double with the right side facing in. The fabric then has a fold edge and a selvedge edge. When cutting from a single fabric layer, the right side should face up.

Pattern pieces which are shown in the cutting layout with broken outlines should be pinned to the fabric with their printed side facing down.

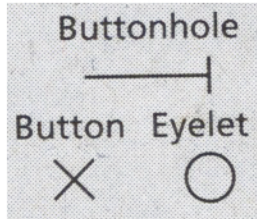
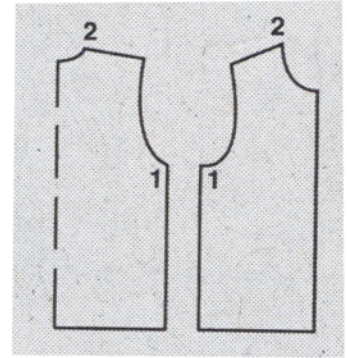
Grey shaded areas in the cutting layout indicate which pieces are to be interfaced.

Transfer the pattern piece lines to the wrong side of your fabric with burda dressmaker's carbon paper. Hand-baste along lines (e.g. for pockets or centre front) to make them visible on the right side of the fabric.

Key Symbols:

Seam numbers

show where pattern pieces must be sewn together. Match pieces with the same numbers.

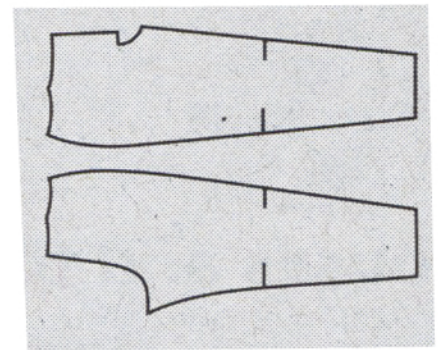


Seam marks

on long seams. Match the small symbols to one another.



Presser foot is the symbol for seam and top-stitching lines.



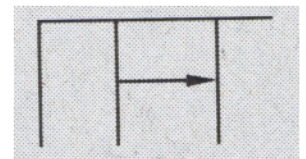
Scissors

indicate edges to be cut without seam allowances and also slash lines, e.g. pocket openings.



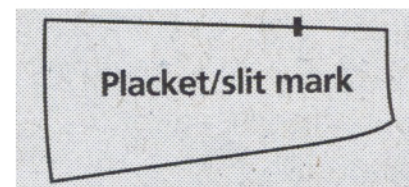
Pleat symbol

Fold pleat in direction of arrow.



Placket/slit mark

Indicates beginning/ end of placket/slit.



Gather
Ease
Stretch

