

### 6005 Shorts

Sizes 34, 36, 38, 40, 42, 44, 46

Upper waist band edge = 1 3/5" (4 cm) below the waist.

### Materials

**Gabardine,**

**width:** 140 cm (55 ins)

**length:** 1.00 1.00 1.20 1.20 1.20 1.20 1.20 m  
( 1 1/2 1 1/2 1 5/8 1 3/4 1 3/4 1 3/4 1 3/4 yds )

**Interfacing,**

24 X 24" (60cm X 60cm)

10 buttons

**Recommended fabrics:** Stretchable fabrics as gabardine, jeans and cotton

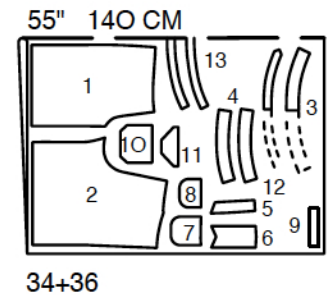
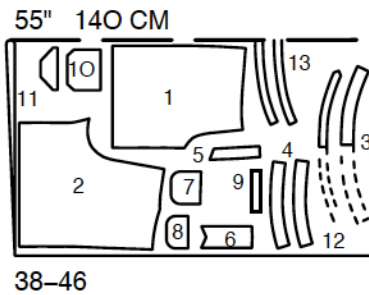
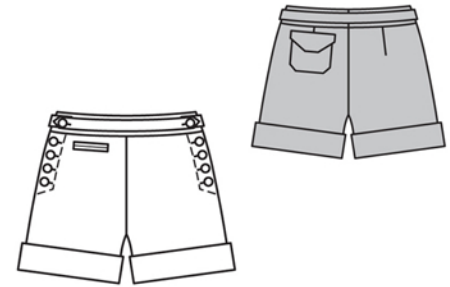
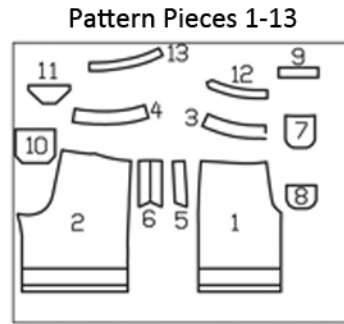
### Preparations

Print the pattern out on letter or A4 sized paper. It is **very important** to not scale or fit any of the pages, you must print the document in **actual size**. Your pattern will print on multiple pages, which you will then tile together. Arrange the sheets on a large, hard and flat surface matching up the numbers and letters (i.e. 6A to 6A). Cut or fold one of the sides and match the edge to it's corresponding side. Then, tape down in place so paper is secure.

Trace the pattern pieces from the pattern sheet following the lines and markings for your size.

In part 1 mark the buttonholes and the stitch line at the same width to the side edge and upper pant edge as size 34 mark. In part 3 and 12 mark the buttonhole at the same width to the edges as size 34.

Seam and hem allowances are included on an average: 5/8" (1.5 cm) for all edges and stitches.



For a single layer of fabric, the pattern pieces are pinned to the right side. For double layers of fabric, the right sides are facing and the pattern pieces are pinned to the wrong side. Use fabric with a width of 140cm.

### Cutting Out

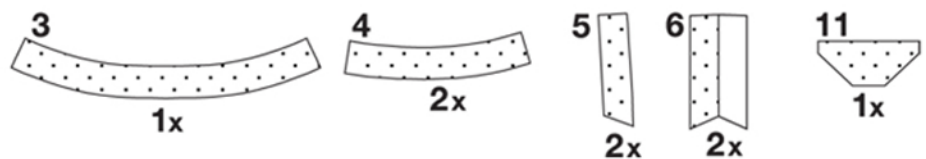
1 Front pant	2x
2 Back pant	2x
3 Front waist band	2x
4 Back waist band	2x
5 Front Facing	2x
6 Underlap	2x
7 Pocket pouch	1x
8 Pocket pouch	1x
9 Pocket welt	2x
10 Pocket	1x
11 Cover	2x
12 Front belt	2x
13 Back belt	2x

### Interfacing:

Cut interfacing according to the drawing below and press onto the left fabric side.

Transfer all lines of the pattern onto the right side of the fabric using basting stitches.

### INTERFACING



### Sewing

#### Bound pocket /right front pant:

Press a strip of interfacing onto the wrong side of the fabric of the right front pant piece over the marked lines of the pocket.

Important for sizes 36 to 46: Draw in lines between the end marks of the pocket on the front left pant leg. Between those lines, draw the cutting line, around 1/2" (1.3 cm) shorter at each end. Transfer lines to right side of fabric using basting stitches.

Baste pocket welts onto both sides of the cutting edge of the front pant piece and stitch using 3/8" (0.7 cm). Secure seam ends. (a)

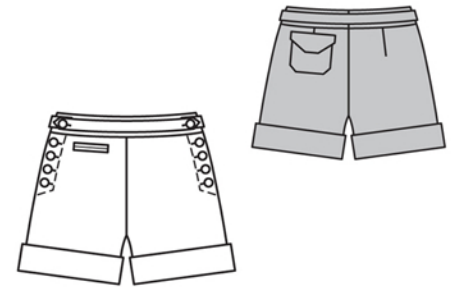
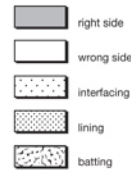
Cut pant piece between the stitching lines along the cutting marks and cut diagonally coming close to the last stitching line, forming little triangles. Don't cut into the piping tapes. Press the piping tapes onto the seam. (b)

Turn the piping inwards and baste, approach from the right side, to make them of equal width and make them cover the cutting. Press. (c)

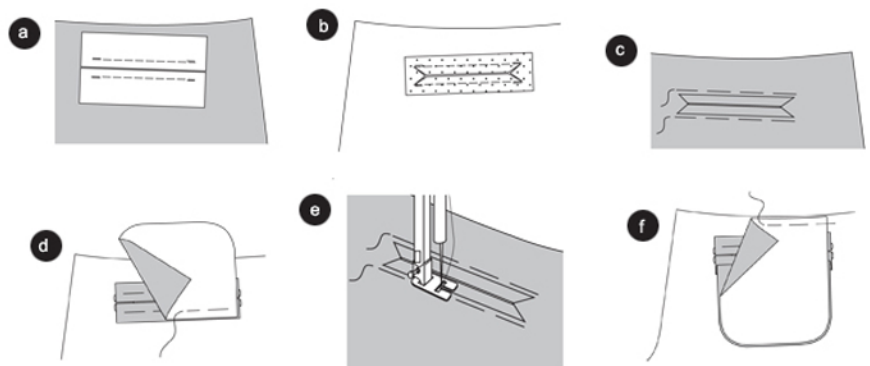
Baste pocket pouch (piece 8) in such a way onto the left fabric side, that the even edge above the seam will be positioned below the piping. (d)

Stitch exactly along the seam of the bottom piping, approaching from the right side. Thereby stitching the pocket pouch. Press pocket pouch downwards. (e)

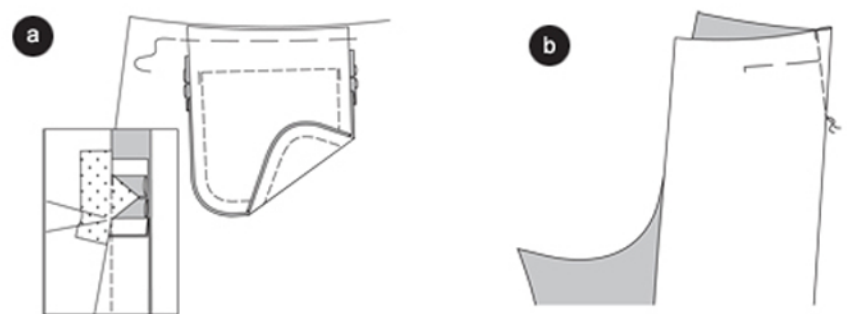
Pin the other pocket pouch onto the upper pant edge so that the bottom and side edges of the pocket pouches lay on top of each other. Approaching from the right, stitch along the seam of the upper piping, thereby closing the pocket pouch. (f)



### Bound pocket / right front pant



### Pocket Pouch / darts:



#### Pocket Pouch / darts:

Fold the triangles at the cutting ends inwards. Baste pocket pouches one on top of the other, cut, trim and stitch them together one on top of the other starting at the bottom pocket pouch; thereby beginning or ending at the seam of the upper piping. Stitch through the triangles. (a)

Pin Darts of the back pant pieces and stitch peaked. Knot threads. Press darts towards the center back. (b)

### Sewing

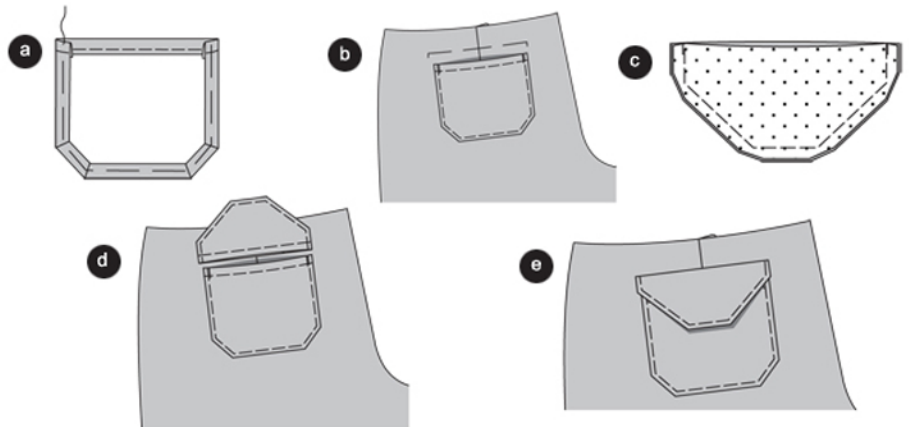
### Pocket / left back Pant piece

#### Pocket /left back Pant piece

Neaten pocket edges. Fold and press the allowances of the upper edges, stitch. Fold and baste the allowances of the bottom edges, press (a) Baste pocket, meeting the line (where the pocket flap piece will be attached), onto the left back pant piece and topstitch narrowly. (b)

#### Pocket Flap

Pin pocket flap pieces on top of each other, right sides facing, baste edges on top of each other according to the drawing and stitch. Trim allowances and cut corners diagonally. Turn flap. Baste edges, press and topstitch the edges. (c) Stitch flap with upper side facing right side of pants, along the marked line. Secure seam ends (d). Press cover downwards (e).



### Button facings

#### Button facings

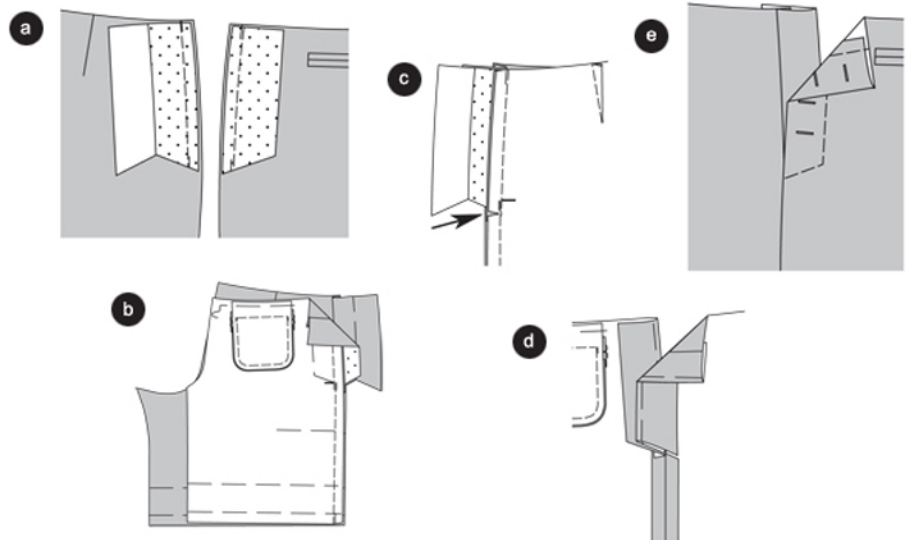
Baste facings for buttons onto the front pant piece, right sides facing (seam 1) and stitch. Secure seam ends. Baste underlap onto the back pant pieces, right sides facing (seam 2) and stitch. Secure seam ends. Press pieces in each case onto the beginning seam and neaten the other long trimming and underlap edge. (a)

#### Side seams

Position front pant pieces onto the back pant pieces, right sides facing, baste side seams from the slit mark all the way down (seam 4) and stitch. Secure seam ends (b). Clip the back pant parts along the underlap close to the stitching line (arrow). (c)

Neaten allowances and press apart, fold and baste the facing of the front pant piece inwards. Baste the facing of the underlap along the fold line inwards. Press edges. Stitch back pant pieces along the underlap beginning seam, thereby including the inner edge. (d)

Stitch the front pant pieces according to the drawing, thereby stitch the facing. Do NOT include the underlap. Sew the buttonholes. Pin slit and stitch along the diagonal bottom stitch line, through both the facing and the underlap. (e)





### Sewing

#### Inside pant leg seams

Fold pant legs lengthwise, right side inwards. Baste inside pant legs (seam 5) and stitch. Trim allowances and press apart. (a)

#### Front center seam

Turn one pant leg inside out. Move pant legs, one inside the other, right fabric sides must be facing. (b)

Stitch center seam along the front upper edge to the inside pant leg seams. Secure seam ends. Trim allowances. (c)

#### Front waistband

Baste front waistband including interfacing onto the front pant pieces (seam 1) and stitch. Press allowances inwards towards the waistband. (a)

Fold and press the allowances of the bottom edge at the other front waistband (without interfacing). Pin this waistband on top of the already stitched waistband, right sides facing. Baste upper and side edges on top of each other. Trim allowances, cut corners diagonally. (b)

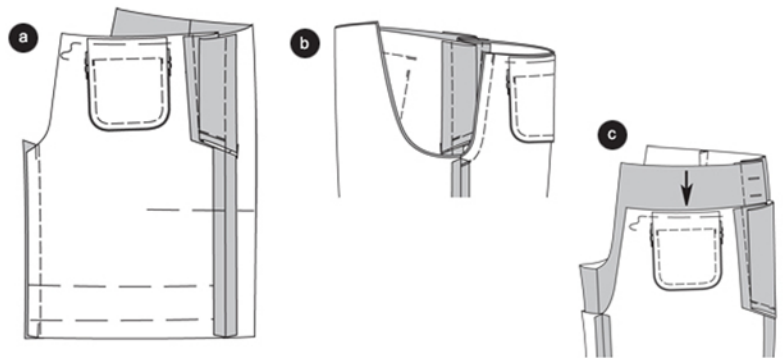
Turn waistband. Baste edges, press and stitch narrowly all around, thereby stitching the inner half of the waistband. Sew the buttonholes. (c)

Baste back waistband pieces including the interfacing onto the back pant pieces (seam 3) and stitch. Press allowances inwards towards the waistbands. (d)

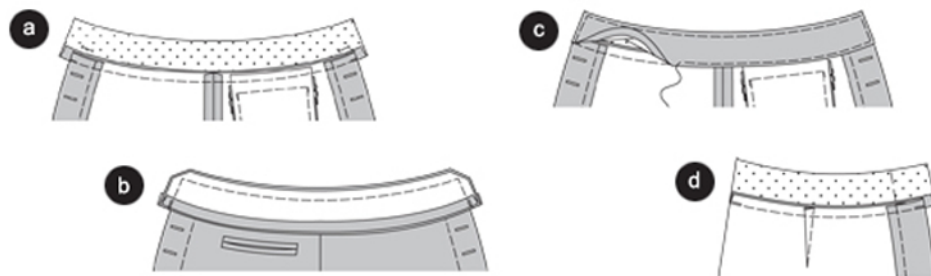
#### Center Back Seam

Move the pant legs (one folded inside out), one inside the other one. Baste the center back seam (also at the waist) and stitch. Neaten allowances and press apart starting from the top to the beginning of the rounded part (crotch). Position the back waistband pieces (without interfacing) on top of each other, right sides facing, sew center back seam. (a)

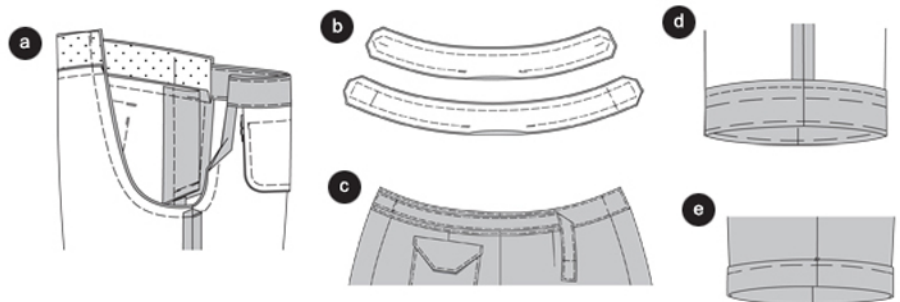
### Inside pant leg seams / front center seam



### Front waistband



### Center back seam / belt / cuff



#### Belt

Position the front and back parts of the belt on top of each other, right sides facing, baste edges on top of each other and stitch, thereby leaving an opening to reverse the belt. Baste edges, press and stitch narrowly. Sew the buttonholes into the front part of the belt. (b)

Pin the back part of the belt, meeting the lines, onto the back waist band, pin the ends to the extension of the underlap seam. Apply **BUTTONS**, fitting the buttonholes, onto the underlap and the back waistband. Button up the slit, and fix and button up the front part of the belt onto the waistband. (c)

#### Pant cuff

Neaten bottom pant edge, fold inwards and baste along the CUFF FOLD LINE, press and stitch. (d)

Turn the bottom pant edge outside along the HEM FOLD LINE. Baste cuff, press, and possibly secure with some stitches on inner and outer leg seam. (e)